

Frigidaire Refrigerators

Thinking of you
Electrolux



providing families with safe
and reliable food
preservation

NO ONE
knows refrigeration like

Frigidaire

Fresh

No one does fresh like Frigidaire!

Thinking of you

 **Electrolux**

■ How do we promote fresh at Frigidaire?

- PureAir™ air filtration
- PureSource™2 water filtration
- Fresh-Lok™ humidity crispers
- Dishwasher-safe door bin liners

■ So what does all that get you?

- Filtered air in both the fresh food and freezer compartments so that your breakfast doesn't taste like last night's dinner and your ice doesn't absorb the odor from the fish you just put away
- Refreshing filtered ice and water at the touch of a button
- Humidity controlled crispers to promote better food preservation for your fruits and vegetables
- Door bin liners designed for easy removal and quick clean-up in case of spills or leaks – no mess, no odor, no fuss



Clean and Organized

The maximum flexibility in organization and cleanliness!

Thinking of you

 **Electrolux**

■ How does Frigidaire help you stay clean and organized?

- Bright white interior
- SpillSafe™ shelves
- Easy clean crispers
- Dishwasher-safe door bin liners
- SpaceWise™ design
- EasyCare™ stainless steel

■ What does that mean to you?

- Bright white interior to reflect the lighting for easier viewing of contents
- Multiple shelf, bin, and crisper storage options offer the ultimate in organization flexibility and accessibility
 - SpillSafe™ shelves can contain up to 29 ounces of spilled liquids making cleanup a snap!
 - By eliminating corners, we've constructed easy clean crispers – nowhere for dirt to hide!
 - Door bin liners designed for easy removal and quick clean-up in case of spills or leaks – no mess, no odor, no fuss
- SpaceWise™ design - take back your kitchen without losing usable shelf or crisper capacity!
- EasyCare™ stainless steel reduces the instances of fingerprints and smudges. EasyCare™ = Easy Clean!

Green

It ain't easy being green, but we've been doing it for awhile!

Thinking of you

 **Electrolux**

- **What does “Green” mean at Frigidaire?**
 - Manufacturing efficiencies
 - Energy Star
 - Variable Speed Compressor
 - Dynamic Cool System
 - PureSource²™ Ice and Water Filtration
 - PureAir™ Air Filtration
- **What does that mean to you and the environment?**
 - Juarez, Mexico and Anderson, SC factories are ISO14001 certified and, unlike some of our competition, we do not use the HCFC 141B as a blowing agent in Mexico; instead, we use the HFC 245FA which is more environmentally friendly - no chlorine
 - 72 percent of our SxSs and 21 percent of our TMs are E-Star certified
 - Our variable speed compressor reduces temperature fluctuations to just 3°F from set point which means lower energy consumption and superior food preservation
 - The Dynamic Cool system cools the fresh food section 25% faster for food temperatures that are consistently maintained
 - Don't pay for tap water in a bottle or contribute to landfill overcrowding – PureSource™ filtered ice and water is a refreshing, convenient, economical, and eco-friendly alternative to bottled waters!
 - PureAir™ air filtration reduces and/or eliminates the odor pollution generated by fragrant foods stored in your refrigerator. PureAir™ - so your breakfast doesn't taste like last night's supper!

New 2008 Energy Star Guidelines



- 72 percent of our SxSs and 21 percent of our TMs are certified at the new 2008 energy percent standards for Energy Star™

What does that mean?

- ✓ 2008 Energy Star™ qualified refrigerator models use at least 20% less energy than required by current federal standards
- ✓ Last year's (2007) Energy Star™ refrigerators used at least 15% less energy
- ✓ 2008 Energy Star™ refrigerators use 40% less energy than the conventional models sold in 2001
- Energy Efficiency is gained through refrigerator design, more efficient compressors, fan motors
- Energy also is saved through using an adaptive defrost that automatically adjusts defrost cycles based on usage

Benefit:

- 20% energy savings over non-Energy Star™ models. (Energy savings = \$\$\$!)
- Energy rebates in some states or localities
- Energy conservation

Frigidaire Fabric Care Webster City, Iowa USA

Thinking of you
Electrolux

Plant



- Established in 1937
- Started w/ Wringer Washers
- *Beam, Studebaker, Franklin, WCI, Frigidaire, **Electrolux**(’89)*
- **750,000 sq. foot Production Facility**
- **250,000 sq. foot Finished Goods Warehouse**
- **5 Unique Assembly Lines**
- **Supporting Plastics, Paint, & Press Departments**
- **Annual Volumes ~ 2.4 Million**

Products



Top Load Washers



3.5 cu ft Capacity Front Load Washers



3.1 cu ft Capacity Front Load Washers



Matching Electric And Gas Dryers



Laundry Centers Top and Front Load

Front Load Washer Retail Sales Presentation 101



Over 60% of washer customers walking into your store are predisposed to buying a top loading washer.

- Reasons:
1. Familiar with how it works
 2. Cheap to PURCHASE
 3. Available at any appliance dealership

Objections to and misinformation about front loader washers can be overcome when we return to fundamental presentations

Why Frigidaire Front Load for your sales floor?



- Frigidaire's parent company, Electrolux, is the world's largest producer of front load laundry equipment.
- Over 40 years of front load manufacturing expertise.
- The only brand offering products and price points for the velocity portion of the front load business.

Over 50% retail sales at \$599 to \$799 for washer

- 7 Washer models with real retails from \$499 to \$899.

Front Load Washer Retail Sales Presentation 101



Objections to front loader purchasing can be overcome when we return to fundamental presentations.

- 1. Front load washers save more (money/work/time) actually pays for itself in about 7 years (or less) through savings in water/electricity/gas cost.**
- 2. Front Load washers are simple to operate.**
- 3. Front load washers wash more clothes per load. Our 3.5 cu ft capacity machine washes at least 50% more clothing than top loaders.**
- 4. The water in wash tub never comes above the lower door opening. No leak.**
- 5. Automatic water fill means no waste. Correct level every load.**
- 6. Add-a-garment feature. Pause the cycle. Door unlocks. Open door with no water spillage. Add garment. Close door . Resume cycle.**
- 7. Washer door is locked from start to finish of cycle.**
- 8. Frigidaire front loader rinse 2 time. Top loaders rinse once. Cleaner clothes. Whiter whites and more brilliant colors.**

Frigidaire Energy Efficient Washer Benefits



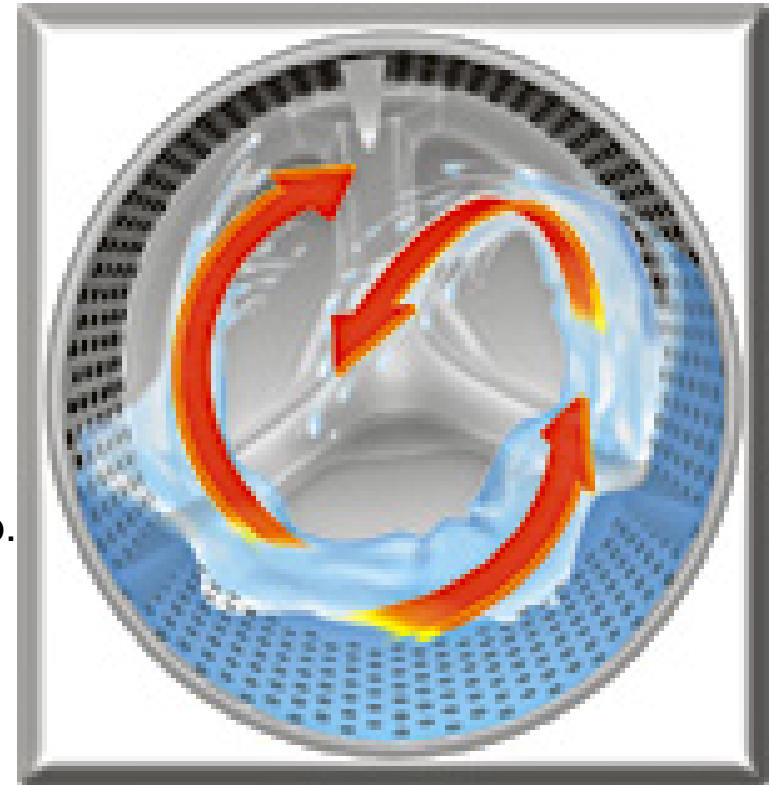
- **Water and Energy Savings**
 - Uses as little as 13 gallons per regular cycle compared to minimum 40 gallons or up to 70% less than top load vertical axis washers.
 - Washer automatically determines water level to assure effective cleaning and rinsing with every wash load.
 - Great water extraction=less energy used on dryer.
- **Less “Wear and Tear” on Fabrics**
 - Gentle tumble action does not stretch or pull clothes.
- **Wash Load Versatility**
 - Large items: sleeping bags, coats, comforters.
 - Small items or a single garment load.
- **Noise/Sound of wash action is much quieter than top load washers.**

Tumble Action Cleaning System

Thinking of you

Electrolux

- Clothes are cleaned by tumbling through concentrated pool of detergent.
- Utilizes two-way, reverse tumble action.
 - A series of clockwise and counter-clockwise tub rotations alternating every 13 seconds
 - Pauses 4 seconds to switch directions
- Rollover 35 times/min vs. 6 times/min with top load washers
 - Rollover is the continuous movement of fabric from the bottom of the tub, to the outside, to the top, and then back to the bottom of the tub.
 - Washes so gently, no lint filter is required in washer.
 - Superior removal of stains and soils due to detergent and water flowing continuously through clothing fibers.



Internal Heater - Affinity 7000 / 8000 series washers

Thinking of you

Electrolux

- **Why have a heater?**
 - Heater turns on for Deep Clean / Sanitary once the water level reaches a set point. The heater maintains a set point of 152F.
- **ATC (Automatic Temperature Control)**
 - ATC Cold- Heater turns on if the water temp drops below 65 F.
 - ATC Warm- Heater turns on if the water temp drops below 78F.
 - ATC Hot- Heater turn on if water temp gets below 120F.
 - ATC selection must be used for the heater to regulate normal water fill selections.



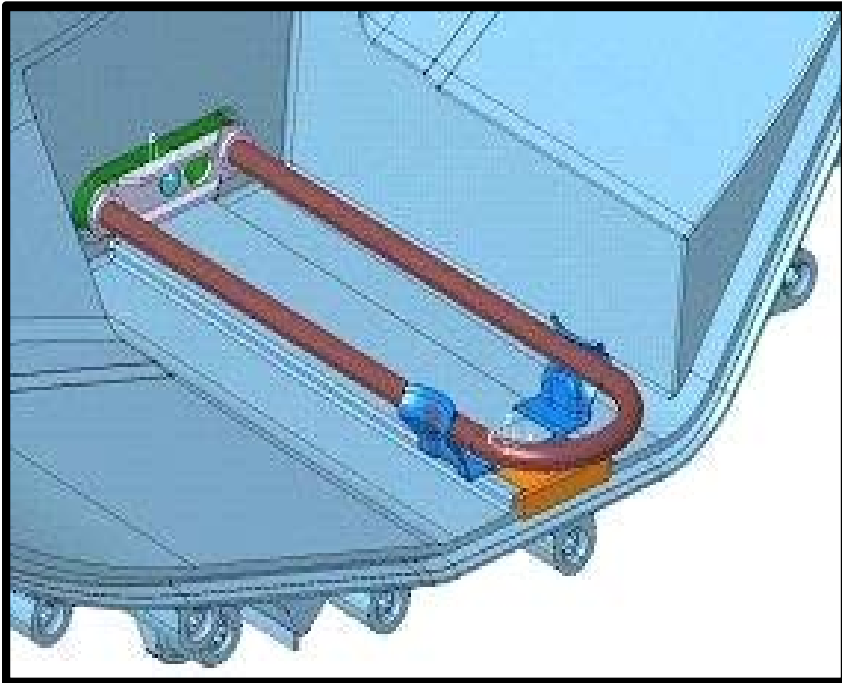
1000 Watt Heater

The heater rod is made of Incolloy 800, which is very strong and resistant to corrosion. This rod is formed (bent) into the "U" shape. This heater is made in Europe on a automated line. The support bracket that holds this heater in place is made of 304 stainless steel.

Internal Water Heating Element

Thinking of you

Electrolux



- Located in the sump area of the outer tub, sensor measures and heater boosts water temperature (as needed) inside the wash tub.

▪ Internal water heater

- Heats the water (150°+) in Deep Clean / Sanitary cycle. NSF certified to kill 99.999% of bacteria during the sanitary cycle.
- Ensures consistent temperatures in with Automatic Temperature Control (ATC) to maximize efficiency.
- Excellent for cleaning bed sheets, pillow cases, towels and bath mats.

Advanced Rinsing Technology

Thinking of you

Electrolux

- ART showers the clothes with fresh, clean water in the final stages of the rinse to provide more effective rinsing.
- Our competitors rinse clothes with water delivered through the dispenser containing chemical residues.
- **Consumer benefit is whiter whites and less irritation to sensitive skin by reducing allergens remaining on fabric.**
- **Available on all 3.5 cu ft IEC Front Load Washers.**



Front Load Pays You Back in Efficiency versus Top Load

Thinking of you

 **Electrolux**

- All Frigidaire Front Load washers meet **Energy Star 2008** requirements!!
 - Meets stringent US Department of Energy guidelines for energy efficiency.
- **Saves up to \$130/year*** in water/electricity/gas costs versus a standard top load washer.
 - 82%* more efficient than the Federal Minimum Standard! (*ATF6000s at 2.29 MEF vs. 1.26 Minimum Standard)
 - Uses as little as **13 gallons** per cycle versus up to 43 gallons on top load washers resulting in 10,000 gallons saved annually.
 - Washer automatically determines water level to assure effective cleaning and rinsing with every wash load.
- All Affinity washers meet **CEE Tier 3** requirements for super-efficient home appliances exceeding minimum Energy Star requirements.



**+\$50/year
Capacity vs. TL**

**\$180/year
Total Savings**

*Top load washer comparison at federal minimum standards

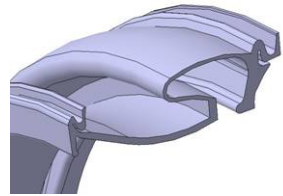
Vibration in Front Load Washers

- Consumer Benefits of vibration elimination
 - Since 52% of all households have the laundry room on the main floor, the elimination of vibration noise allows consumer to do laundry where they live without the noise
 - Loud noises caused by vibration disrupts family activities.
- What causes vibration?
 - During the ramp up and ramp down phases of the spin cycle, the wash load tends to be unevenly distributed in the wash tub, which leads to the vibration.
 - The heavier the wash load, the more severe the vibration.
 - Placing the washer on a pedestal or an uneven/unstable surface increases chances of vibration
 - There is usually no vibration at maximum spin speed.
- What can be done to eliminate vibration?
 - Shorten duration of ramp up and ramp down phases of the spin cycle
 - Utilize shock absorption devices to reduce vibration
 - Install more foam insulation to absorb noise

Silent Design and Vibration Control

Thinking of you

Electrolux



> S-Shape Bellows

- Allows for a tighter fit and seal on the door for a more quiet and stable washing machine

> Dual Stage Shocks

- Absorbs vibrations in two stages during spin cycle
- Automatically adjusts to weight of wash load



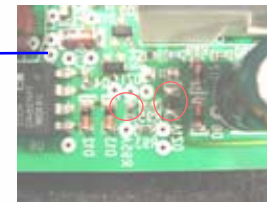
> Heavy Duty Pedestal Back Sheet and Top Pad

- Adds weight and strength to stabilize raised washer during spin cycle



> High Density Foam

- Located behind top and front panels to absorb noise and vibration

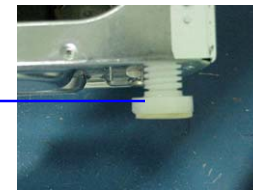


> New Software

- Strategically senses vibration before it happens.
- Enables machine to quickly ramp through any rpm that is causing vibration to occur.

> Polymer Feet with Prevailing Torque

- Keeps the washer stable and balanced.



> Seamless Front Panel

- Reduces vibration
- Contains noise from normal operation

Affinity Washer Performance Summary



- Gentler wash than GE or Bosch.
- Better soil removal than Whirlpool, Maytag, Fisher & Paykel, and Bosch.
- Washers have low water usage for EStar and meet CEE Tier 3 requirements.
- Lowest Remaining Moisture Content among major competitors on washer.
 - Lower dryer energy usage and TimeWise™ technology!
- Less vibration than the competition.
- The right cycles and automatic pump/filter designed to fit today's consumers.

Energy Efficient Washer Spin Speeds Reduce Remaining Moisture Content

Thinking of you
Electrolux

- Frigidaire Energy Efficient Washers remove **UP TO** one quart more water out of the clothing, meaning less water transferred to the dryer!!!
 - 4 glasses of water saved in drying energy usage per cycle versus a top load washer.
 - 98 gallons per year less water sent to the dryer.
 - Reduces overall energy consumption in the dryer with each load – meaning it saves the consumer time and money.



Frigidaire Affinity -The First NSF Certified Laundry Pair

- Frigidaire Affinity are the **FIRST** and **ONLY** washer/dryer pair certified by NSF with stainless interiors.
- Consumers can run any of the following cycle/options to kill 99.9% of harmful bacteria.
- The Affinity ATF7000F/ATF8000F series washers use the Deep Clean Sanitary cycle.
- The AE/GQ7000E and AE/GQ8000F series dryers use the same cycle/option combos as the AE/GQ6700F dryers.

All Your
Laundry
99.9%
Bacteria-
Free

The first washer/
dryer pair with a
Stainless Steel
Interior and
NSF Certification.



Lineup Scenario – Dryer Only

All Your
Laundry
99.9%
Bacteria-
Free

The first dryer with
a Stainless Steel
Interior and
NSF Certification.



- The 6700 series dryers are NSF Certified to kill 99.9% of harmful bacteria.
- In addition, the stainless steel drums in these products will not transfer bacteria load to load, no carry-over.
- Consumers can run any cycle in their washer, then the dryer will sanitize the clothing when any of the following cycle/option combinations are selected.
 - 90 minute timed dry with High/Max Heat
 - Towels with Max Heat.
 - Heavy Duty with Max Heat.

How Does it Work?

Thinking of you

 **Electrolux**

- No harmful chemicals or bleach are required.
- No heavy metal ions are discharged into the washer and subsequent waste water stream.
 - Samsung's SilverCare washers are considered as pesticides by the EPA due to the concentration of heavy metal ions (Silver).
- Good, old fashioned temperature and time are all that is needed.
 - The internal water heater in the Affinity 7000/8000 Washers raises the water temperature to 152° F during the cycle to effectively kill 99.9% of harmful bacteria.
 - The stainless steel dryer heats the air/clothing to 130°F during the cycle to effectively kill 99.9% of harmful bacteria.
 - Note: Unlike dishwasher test protocol, there are not preset temperature/time profiles that must be reached for laundry. NSF testing is done based on the 99.9% elimination of bacteria utilizing temperature and time whereas dishwashers must reach 155°F for 9 minutes.

NSF POP Plans

Thinking of you

Electrolux

All Your
Laundry
99.9%
Bacteria-
Free

The first washer/
dryer pair with a
Stainless Steel
Interior and
NSF Certification.

NSF.

Tested. Certified. Safe.™

All your
Laundry
99.9%
Bacteria-
Free

NSF

Tested. Certified. Safe.™

15" Storage Pedestal

Thinking of you

 **Electrolux**

Industry's Largest Storage Capacity Pedestal



- Raises Product by 15"
- Heavy Duty Ball Bearing Glides
- 2 Interior Dividers / 6 Positions



- Laundry Basket Platform
- Eliminates stooping to load or unload the laundry.

***If you can't take the heat ...
you really should own a
Frigidaire range!***

SpeedBake™ for growth of retail sales and profits

Thinking of you

Electrolux



GLEFZ384GC

Cooktop feature 1-9/12" and 1 6/9" expandable element, PLUS Warming Zone™ and 2- 6" elements. Also available as monochromatic White, Bisque and Black with color matching glass cook top . Oven is 5.4 MAXX capacity. With 2 flat racks and sump rack. 3500 watt 6-pass bake and 3600 watt 6-pass broil elements



With a touch of a rocker switch, the SpeedBake™ Convection System cooks up to 30% faster than conventional ovens and is designed to provide premium performance at a modest price.

***Exceptional
Value***

Key Features and Benefits – Backguard

Thinking of you

Electrolux

Precision Set™ Electronic Surface Element Controls



Exclusive

...bring the latest innovation in the industry to electric surface cooking, enabling precise and accurate control from warm, simmer to boil and everything in between!

The digital feedback to the user provides exact and repeatable temperature control. Melt chocolate without a double broiler, create delicate sauces without scorching, and simmer any pot or pan size at just the temperature!

UltraSoft™ Backguard Design

Exclusive

Sleek new design provides great looks and is easy to clean thanks to its hidden seams, rounded corners, and high gloss contoured smooth surface.

Exclusive to Gallery and Professional Series



Speed Clean / Clean / Maxx Clean™



Exclusive

... offers 3 special cleaning options.

Speed Clean, for light soils is 33% faster than standard. 2 hours.

Clean, for most oven clean ups. 3 hours

Maxx Clean™, offers 25% more cleaning power, for heavy soils at the touch of a button! 4 hours of cleaning!

SmoothTouch™ Backguard Design

Exclusive



Classic smooth lines are distinctively easy to clean with its flat front surface. Exclusive to Frigidaire Brand Series.

Key Features and Benefits - Cooktop

Thinking of you

Electrolux

QuadMaxx™ Expandable Elements



Exclusive

Cooking surface featuring four expandable burners, providing just the right amount of heat to fit a wide variety of pot or pan sizes for extreme flexibility.

Combined with *Precision Set™ E.S.E.C.*, each element has the ability to cook, simmer, and warm!

7/7" Expandable Bridge Element



Essentially combines 3 elements into one.

Two 7" 1800 Watt elements can operate independently or can be combined with an 800 Watt bridge element for maximum cooktop coverage and flexibility.

Warm & Serve™ Zone

A 100 Watt surface element that keeps dishes and items warm until meal time while completing the cooking process.



9"-12" Expandable Elements

Gives twice the flexibility. One versatile element lets the user choose a 9" or 12" element size for the largest pots and pans.



Key Features and Benefits - Oven

Thinking of you

Electrolux



5.4 Cu. Ft. Maxx Capacity™ Oven

Industry's largest useable capacity open element cavity. Our 5.4 cubic foot oven provides *Maxx™*imum flexibility, providing you with the cooking space to adequately prepare for the largest meals or gatherings.



EvenCook³™ Element Convection

...creates the ultimate cooking airflow. Baking and roasting times are up to 30% shorter and foods are juicier and more evenly browned. The European design, with a 3rd element surrounding the fan, eliminates temperature fluctuations and delivers excellent multiple rack cooking performance.



SpeedBake® Convection System

...is initiated at the touch of a switch, and is designed to deliver premium performance at a modest price, as well as being up to 30% faster!

Exclusive

Bake-n-Warm™ Double Oven *Exclusive*



Expands baking capacity by .7 Cu. Ft. by combining a large oven with a fully functional warming drawer to make it more convenient than ever to bake or warm, and it can also be used for storage.

New Flat Oven Racks and Sump Rack? Why?

Thinking of you

Electrolux

- Flat oven racks are a running change in self cleaning oven models. Prior models had upswept rear edge.
- Why? A leading consumer magazine regards the upswept design as decreased cooking rack area. 2 cookie sheets could not sit side by side on one rack and remain flat. New flat rack offers greater cooking area.

Select free standing electric ranges with 5.4 cu ft convection ovens now have hidden bake element. This eliminates the need for the “Bull Nose” lowest rack. Replacement is the NEW Sump Rack.

Bull Nose Rack



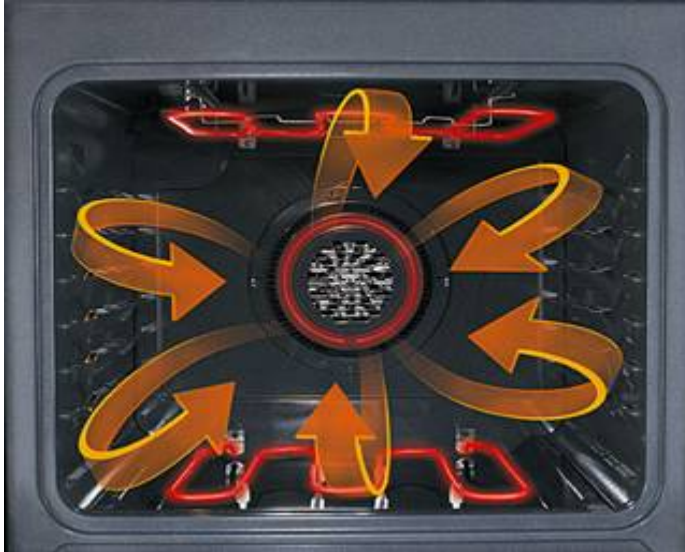
NEW Sump Rack



How does EvenCook3™ Element Convection differ from SpeedBake™?

Thinking of you

Electrolux



EvenCook3™ Element Convection

- Sophisticated Electronics to control cooking process
- Auto-temp reduction
- Three rack baking
- Handles all food groups well.



■ SpeedBake™

- Standard Electronic Oven Control w/manual on switch
- No temperature adjust.
- Two rack baking
- Works best on “dense” food groups

How does EvenCook3™ Element Convection differ from SpeedBake™?

Thinking of you

 **Electrolux**

Air movement is the basis of both, but

- **EvenCook3™ Element Convection** targets the more upscale cook. Built into the sophisticated electronic controls are algorithms that provide features like auto-temperature reduction, three rack baking, “delicate” baking, etc. Convection works well on most all food groups.
- **SpeedBake™** is focused on the everyday cook who would like a speed-up option. The fan assist really reduces cooking times dramatically. It works best on “dense” foods like roasts, poultry, frozen foods, etc.

Frigidaire Dishwashers



Do you think retail customers lie to those survey agencies about their likes and dislikes?

What if you could know what they don't like about their current dishwashers?

Would you rather take away their discomfort/dislike or offer a product that fulfills a survey wish list?

Frigidaire dishwashers are the answer either way.

Top 10 Consumer Dishwasher Issues – Current Dishwasher

Consumers listed the top 10 issues as major problems with their dishwasher. Percentage who indicated this as a major issue.

- 1. Dishes not clean (42.1%)**
- 2. Noise (39.6%)**
- 3. Ability to fit large items (34.0%)**
- 4. Flimsy racks / shelves / drawers (33.3%)**
- 5. Glass pitting / scratching (33.1%)**
- 6. Detergent residue on dishes (31.8%)**
- 7. Capacity (31.5%)**
- 8. Water spots on dishes / glasses (29.9%)**
- 9. Dispenser not emptying / Detergent remaining (28.9%)**
- 10. Dishes not dry at end of cycle (26.1%)**

Top 10 Items Considered In Purchasing a Dishwasher.



Consumer top 10 items considered when purchasing a dishwasher

(all are cited by more than 80% of consumers):

- 1. Reliability**
- 2. Size**
- 3. Price**
- 4. Capacity**
- 5. Quiet functioning / noise reduction**
- 6. Manufacturer warranty**
- 7. Energy Star rating / efficiency**
- 8. Has all the features the consumer wants**
- 9. Appearance / Design**
- 10. Time required to wash and dry dishes**

Frigidaire Dishwasher 101

Thinking of you

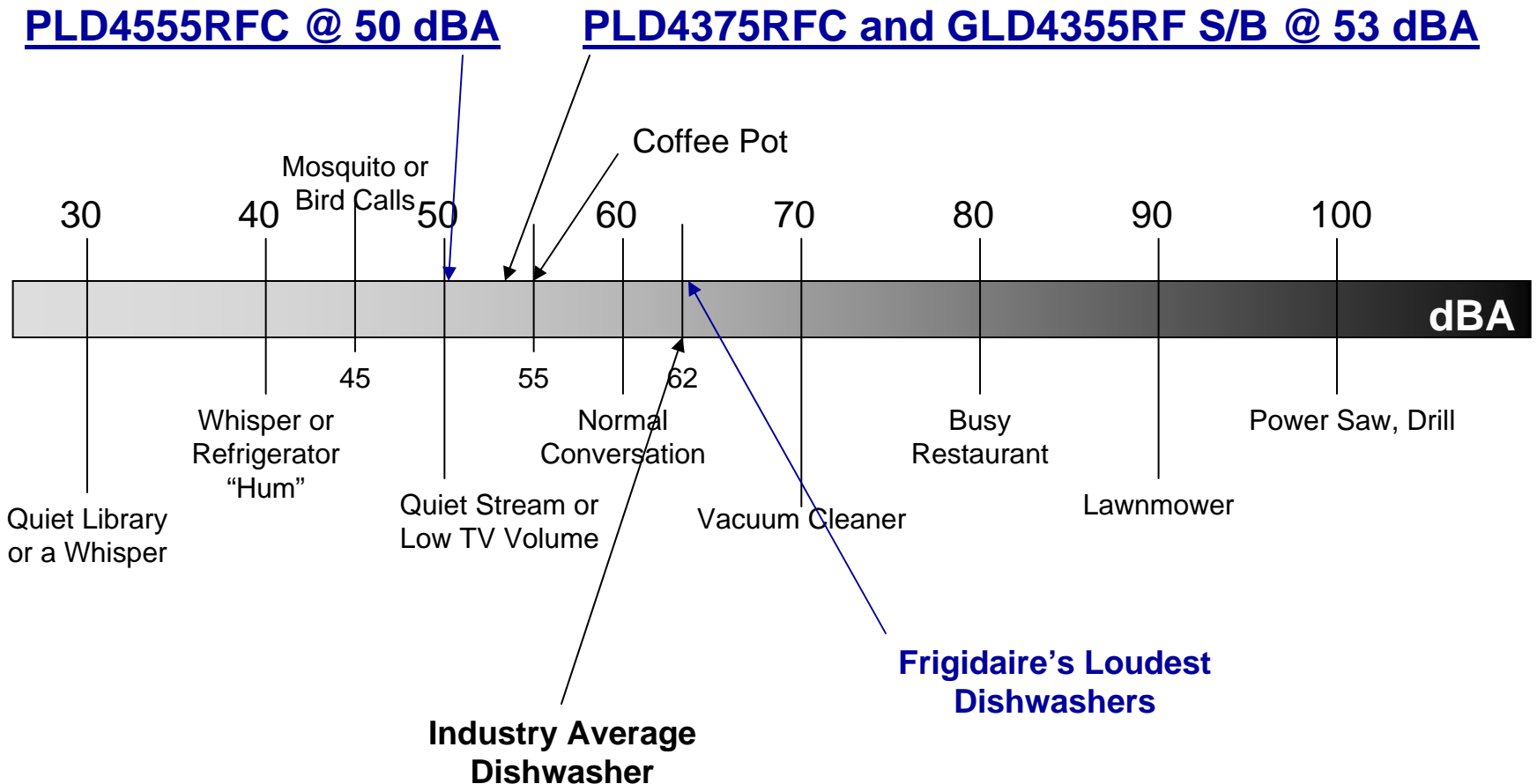
 Electrolux

- **All two wash arm models use alternating wash action for maximum cleaning. 100% of Wash and rinse water passes through a filter so fine it traps something as small as a coffee ground. The filter cleans itself during the wash and rinse cycle**
- **Frigidaire is the quietest dishwasher in it's price range(s).**
- **Every model is a BigTub™ tank. Load 12" items in lower rack and 8" items in upper with no adjustment.**
- **Racks are robust in construction with chamfered pins**
- **Precision Direct Wash system never sandblasts**
- **Detergent residue is normally caused by water temp being too cold**
- **Drying / water spots – use Jet Dry agent plus Frigidaire Sahara Dry**

Frigidaire Fully Integrated Dishwasher

Thinking of you

Electrolux

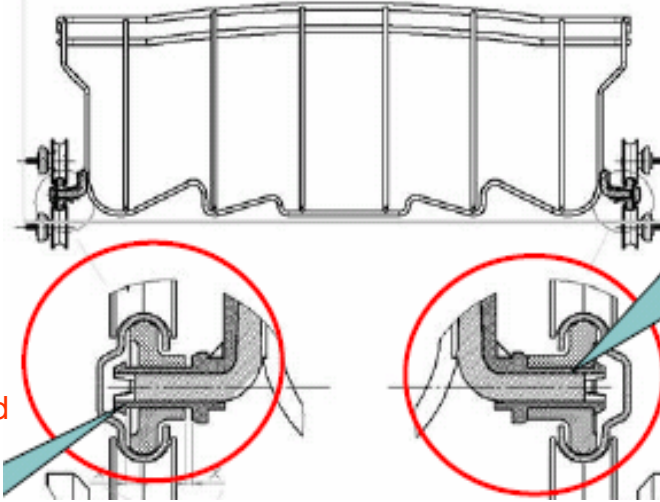


New Premium Rack Glide System

PERFORMANCE IMPROVEMENTS

Thinking of you

Electrolux



Variable Clearance improves stability

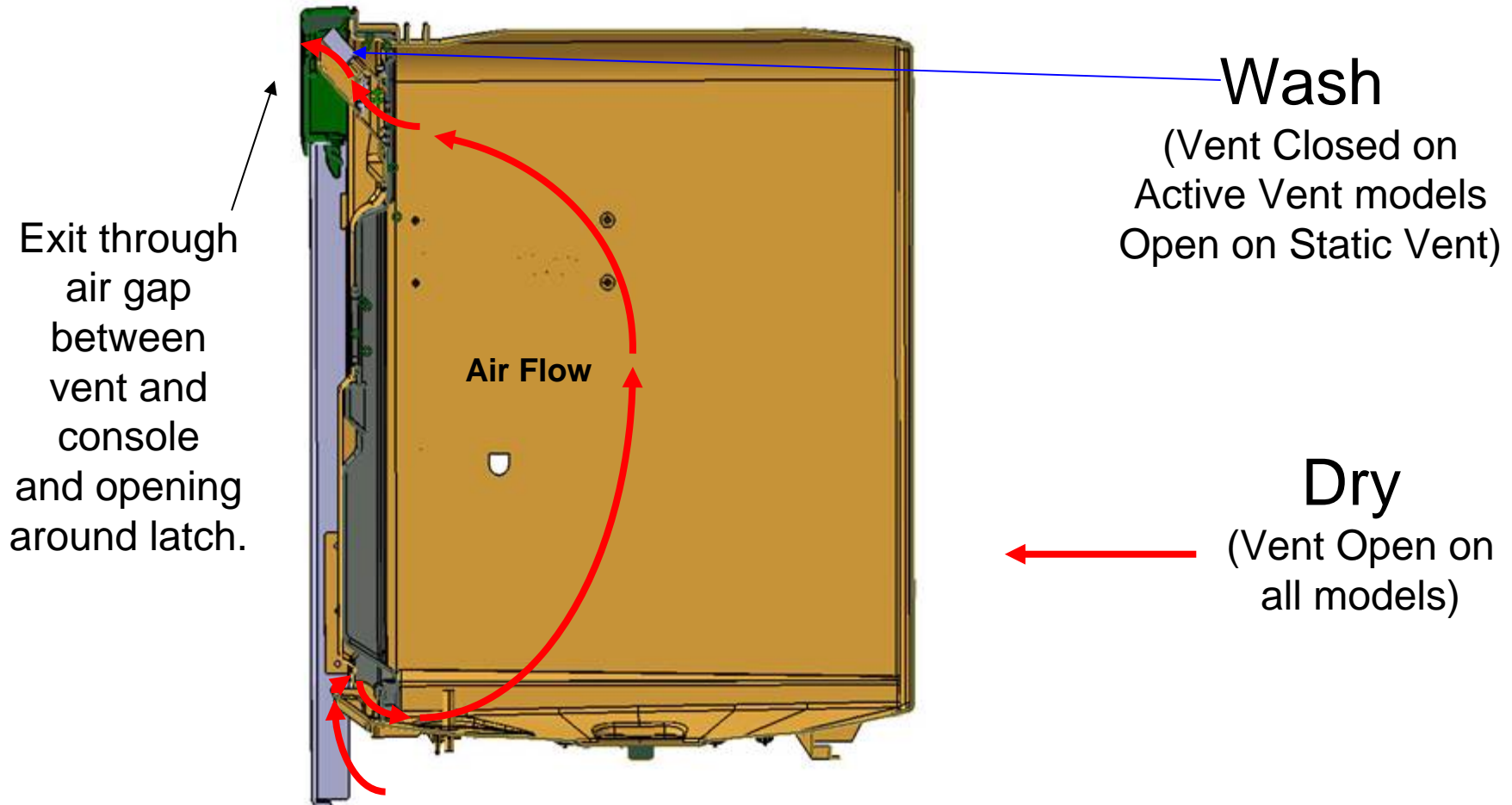
Rounded Profile

**On all GLD4355, PLD4375
And PLD4555 models**

Performance Measurement	Current Glide System (all models)	New Glide System (Fully Integrated Models)
Pull Force: Empty Upper Rack	3.63 LB	1.59 LB
Pull Force: Upper Rack w/ 20lb Load	8.36 LB	7.27 LB
Pull Force: Upper Rack w/ 36lb Load	10.14 LB	9.00 LB

Current Frigidaire (and other brands) Drying Systems

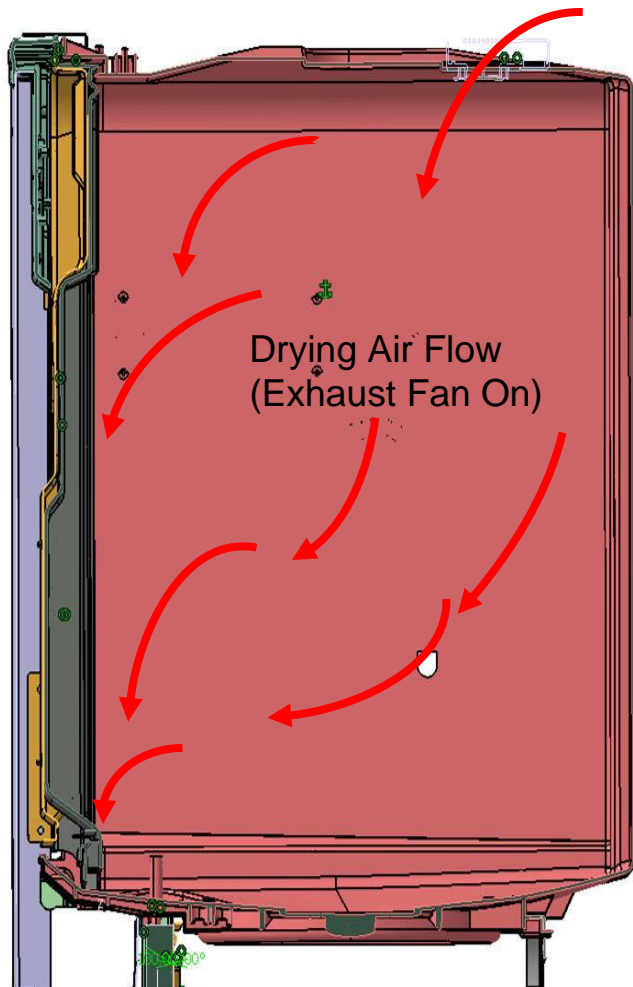
Thinking of you
Electrolux



Frigidaire Fully Integrated Dishwashers' SaharaDry™ Drying System

Thinking of you

Electrolux



SaharaDry™ System Advantages

Photo-optic sensor assures that the vent door is properly closed during wash and rinse cycles.

In the event the vent door is not closed properly, the dishwasher automatically enters a reset routine.

If it does not close during this routine, then the unit is shut down to prevent damage to your cabinetry.

Dual seal mechanism to make sure the water stays where it belongs, in the dishwasher.

Double ball bearing fan for quiet operation and long life.

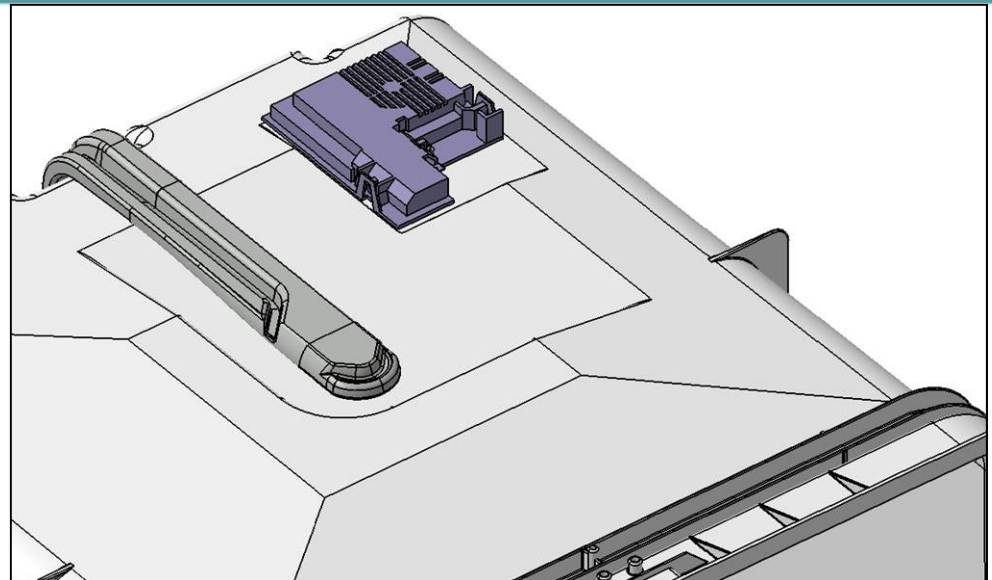
Unprecedented drying performance with up to 70% improvement versus conventional drying systems.

iDry™ Intelligent SaharaDry™ System — With SaharaDry™ Option

Thinking of you

Electrolux

- **The Next Generation in Drying Performance!**
- The blower is located in the back right corner of the top of the tub.
- The blower turns on when the signal for the vent door is opened.
- Air is forced from the top back to the bottom front.

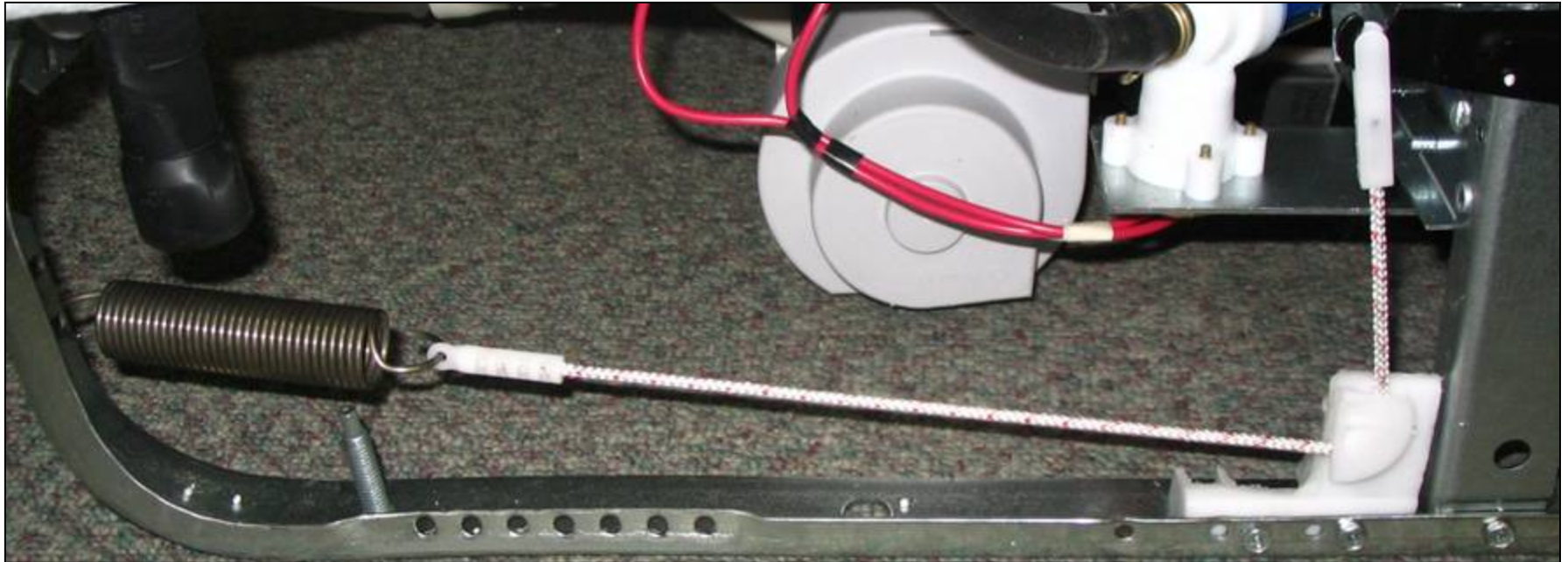


Performance Data

<i>Model</i>	<i>Vent System</i>	<i>Air Dry No Heat</i>	<i>Normal with Heat</i>	<i>Extended Dry Time (SaharaDry)</i>
FDB1050	Static	48%	58%	N/A
PLD2855	Active	49%	75%	N/A
PLD4375RFC & GLD4355RF	Blower	78%	96%	N/A
PLD4555RFC	Blower	78%	96%	99%

Stay Put Door - Convenience and Safety

Thinking of you
Electrolux



Counterbalance Door holds position from top to bottom of travel.

**On models PLD4555RFC, PLD4375RFC
and GLD4355RF S/B**

Fast Finish about Frost Free Freezers and Freezer Burn



Freezer Burn occurs when air reaches the food's surface and dries out the product. This can happen when food is not securely wrapped in air-tight packaging. Freezer burn is a food-quality issue, not a food safety issue.

It appears as grayish-brown leathery spots on frozen food. Color changes result from chemical changes in the food's pigment.

Although undesirable, freezer burn does not make the food unsafe. It merely causes dry spots in foods. Cut away these areas either before or after cooking the food. When freezing food in plastic bags, push all the air out before sealing.

Fast Finish about Frost Free Freezers

- **Source:** www.fda.gov website.
- **Will food that's stored in a freezer for a long period of time be safe to eat?**
- *Safe food that was properly handled and stored at 0° F (-18° C) will remain safe. Only the quality of foods suffers with lengthy freezer storage. Tenderness, flavor, aroma, juiciness, and color of frozen foods can all be affected.*
- **Does freezing affect the level of nutrients contained in foods?**
- *Fortunately, the freezing process itself does not reduce nutrients, and, for meat and poultry products, there is little change in protein value during freezing.*